

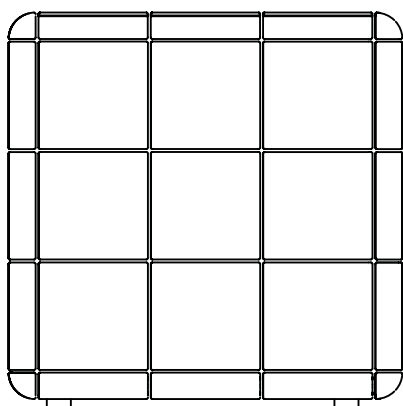
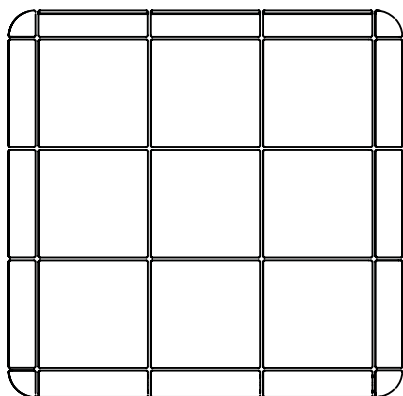


**Federation Husky Side**

# Federation

## Husky Side

### Specifications



520mm

### Finishes



Gloss Ivory



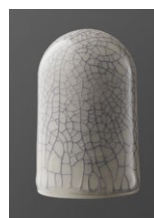
Gloss Black



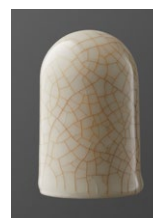
Gloss Royal Blue



Basalt



Antique Black



Antique Sepia



Luxe Gold



Luxe Silver

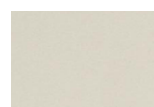


Luxe Blue Steel

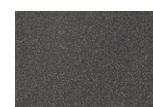


Feather Rooyal Blue

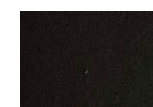
### Grout Options



Vanilla



Charcoal



Black

### Information

appx weight: 35kg - 45kg

Materials: Porcelain on Scyon structure

### Contact

23-25 Derby Street  
Collingwood  
3066 Victoria Australia  
T. +61 3 9044 2728

[www.porcelainbear.com](http://www.porcelainbear.com)



# Porcelain Bear